





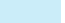


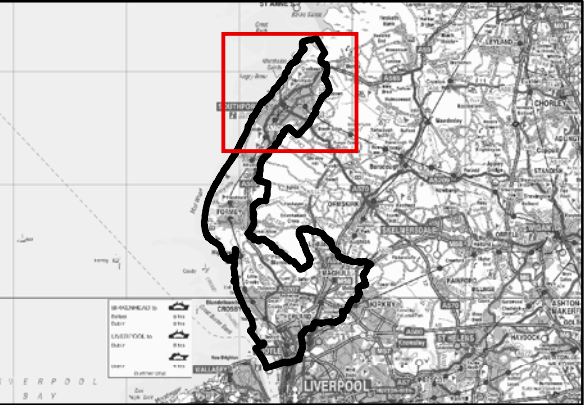


Legend

-  Borough Administrative Boundary
-  Main River
-  Ordinary Watercourse
-  Leeds and Liverpool Canal
-  Permanent Water Bodies
- Defended fluvial model flood outlines
 -  1 in 25 Annual Probability Flood Event
 -  1 in 100 Annual Probability Flood Event
 -  1 in 100 Annual Probability plus Climate Change Flood Event
 -  1 in 1000 Annual Probability Flood Event



Notes

THE INFORMATION PRESENTED HAS BEEN OBTAINED FROM AVAILABLE HYDRAULIC MODELS THAT SHOW THE POTENTIAL CONSEQUENCES OF FLUVIAL FLOODING WITHIN SEFTON.

FLOOD DATA PROVIDED BY THE ENVIRONMENT AGENCY 2012. ALL RIGHTS RESERVED (REF: PRE4990).

REPRODUCED FROM ORDNANCE SURVEY MAPPING WITH THE PERMISSION OF THE CONTROLLER OF HER MAJESTY'S STATIONERY OFFICE. © CROWN COPYRIGHT. ALL RIGHTS RESERVED. SEFTON OS COPYRIGHT (100018192) 2012 UNAUTHORISED REPRODUCTION INFRINGES COPYRIGHT AND MAY LEAD TO PROSECUTION OR CIVIL PROCEEDINGS.



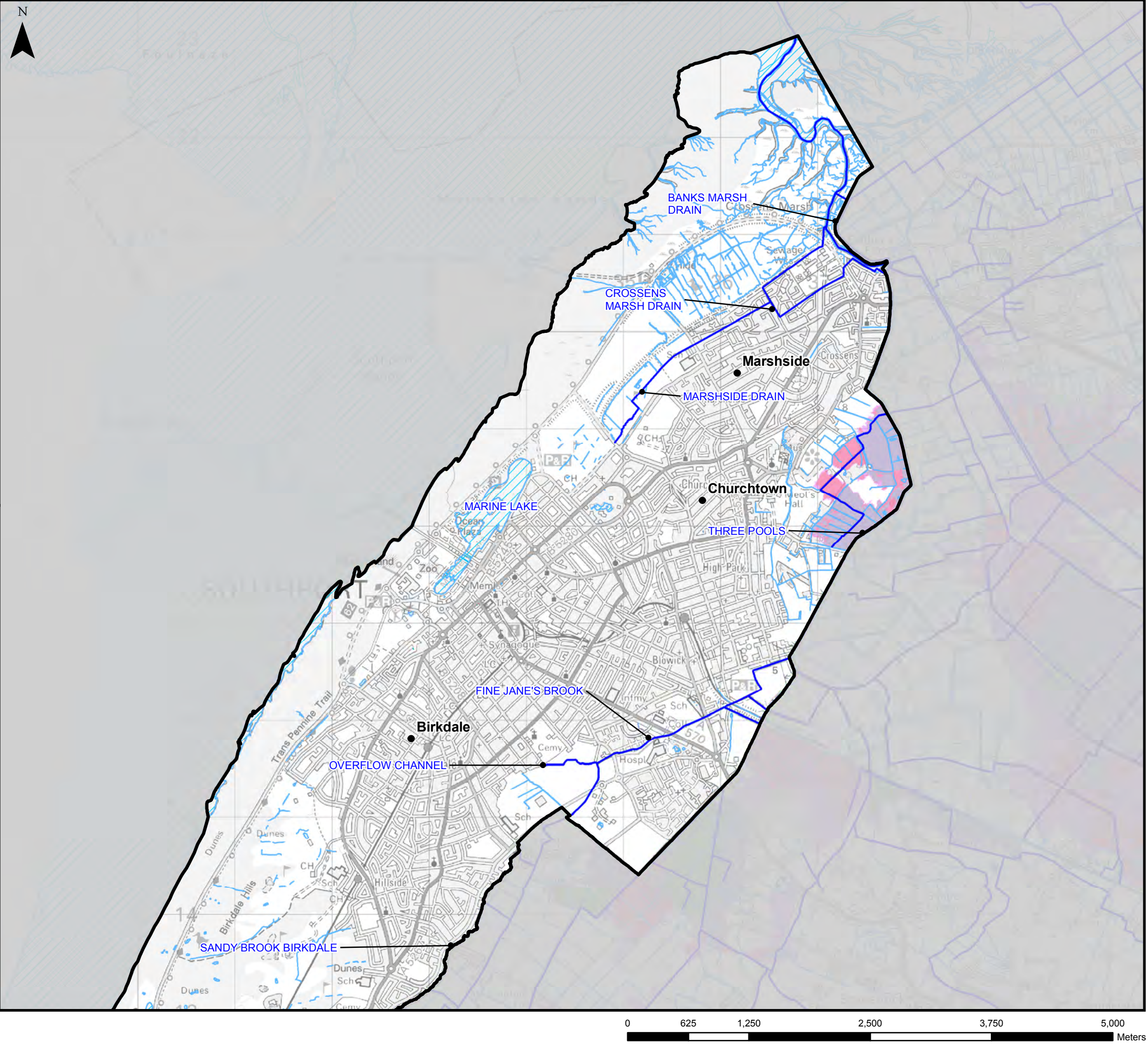
**Sefton Level 2
Strategic Flood Risk Assessment**

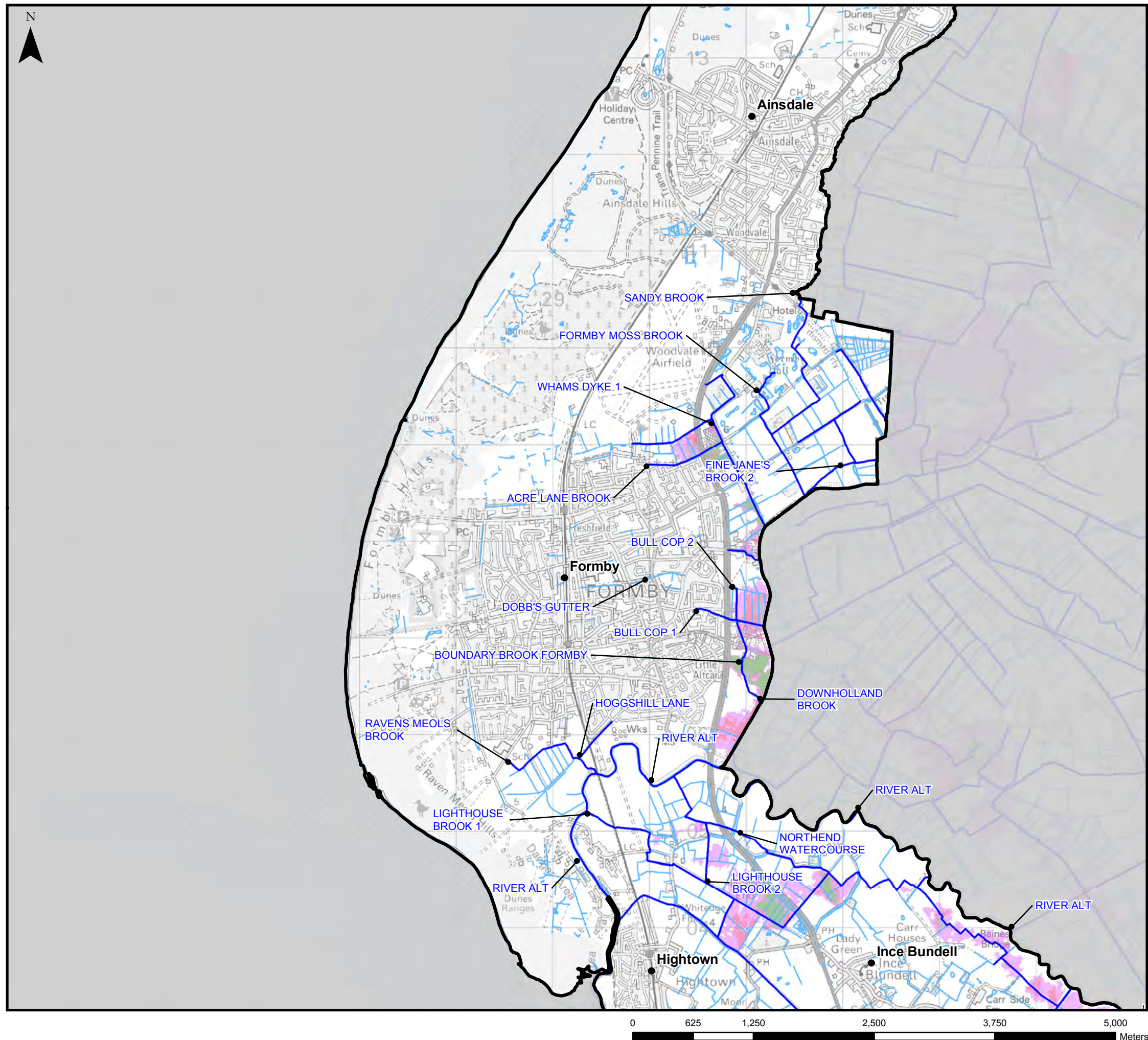
Scale at A3	Date	Drawn by	Approved by
1:40,000	25/10/2012	ER	PR

**Figure 6-1
Fluvial Flood Risk Extents with Defences**

Consultants
CAPITA SYMONDS
Capita Symonds
Omnia One,
Queen Street,
Sheffield,
S1 2DG.

DRAWING NUMBER	REV
CS057949/Fig 6-1	-

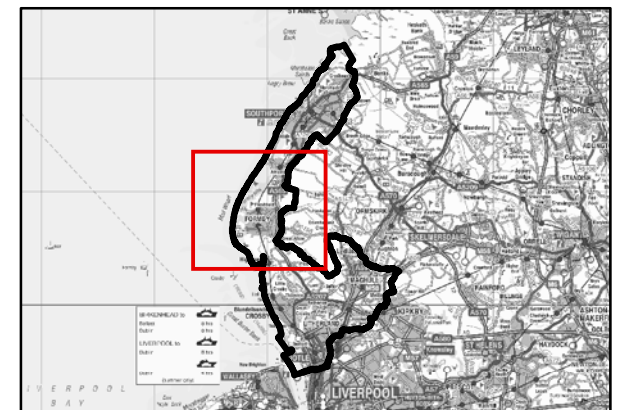




THIS DRAWING MAY BE USED ONLY FOR
THE PURPOSE INTENDED

Legend

- Borough Administrative Boundary
- Main River
- Ordinary Watercourse
- Leeds and Liverpool Canal
- Permanent Water Bodies
- Defended fluvial model flood outlines
 - 1 in 25 Annual Probability Flood Event
 - 1 in 100 Annual Probability Flood Event
 - 1 in 100 Annual Probability plus Climate Change Flood Event
 - 1 in 1000 Annual Probability Flood Event



Notes

THE INFORMATION PRESENTED HAS BEEN OBTAINED FROM AVAILABLE HYDRAULIC MODELS THAT SHOW THE POTENTIAL CONSEQUENCES OF FLUVIAL FLOODING WITHIN SEFTON.

FLOOD DATA PROVIDED BY THE ENVIRONMENT AGENCY 2012. ALL RIGHTS RESERVED (REF: PRE4990).

REPRODUCED FROM ORDNANCE SURVEY MAPPING WITH THE PERMISSION OF THE CONTROLLER OF HER MAJESTY'S STATIONERY OFFICE. © CROWN COPYRIGHT. ALL RIGHTS RESERVED. SEFTON OS COPYRIGHT (100018192) 2012. UNAUTHORISED REPRODUCTION INFRINGES COPYRIGHT AND MAY LEAD TO PROSECUTION OR CIVIL PROCEEDINGS.



Sefton Level 2 Strategic Flood Risk Assessment

Scale at A3	Date	Drawn by	Approved by
1:40,000	25/10/2012	ER	PR

Figure 6-2
Fluvial Flood Risk Extents with Defences

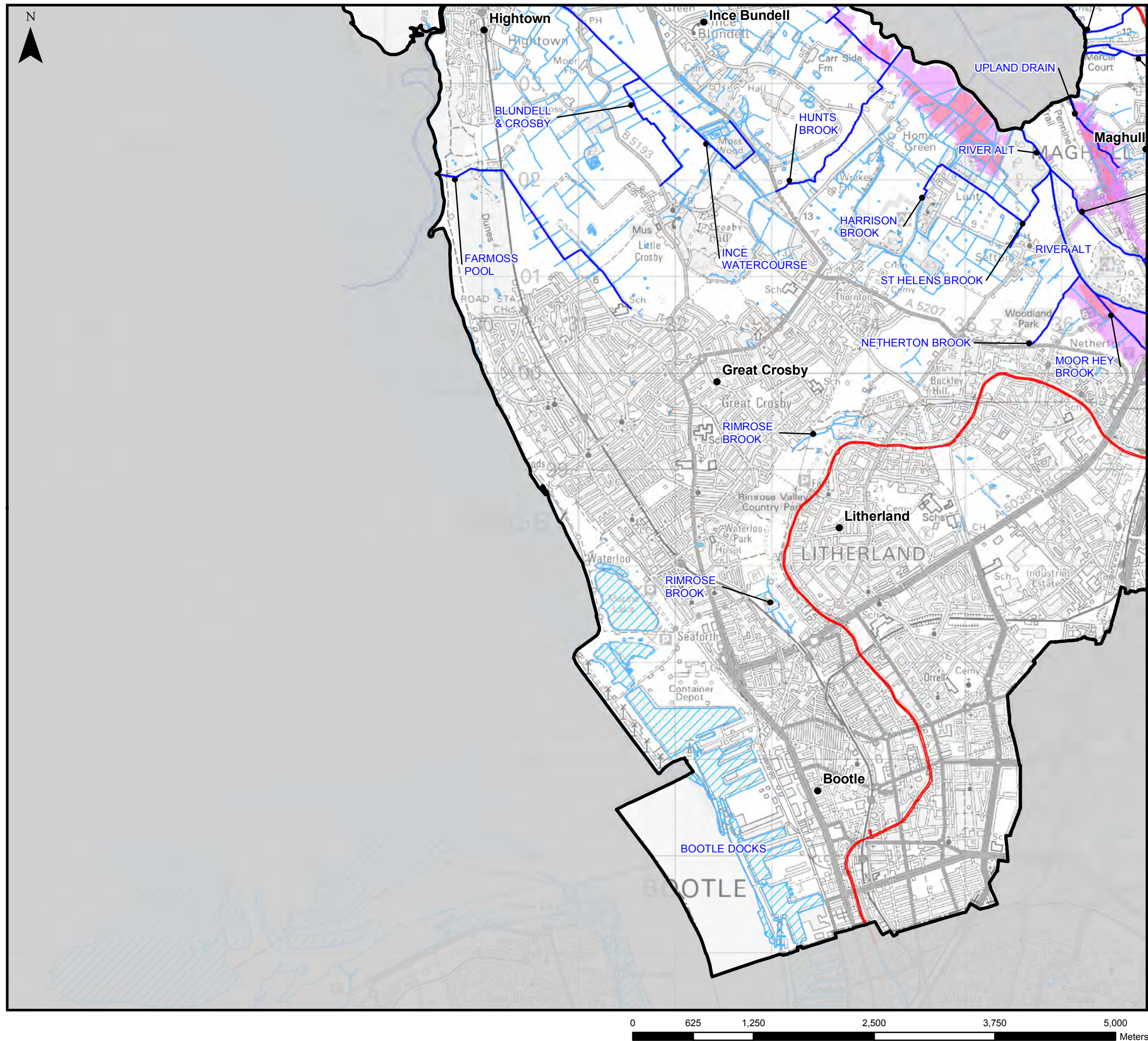
Consultants

CAPITA SYMONDS

Capita Symonds
Omnia One,
Queen Street,
Sheffield,
S1 2DG.

DRAWING NUMBER
CS057949/Fig 6-2

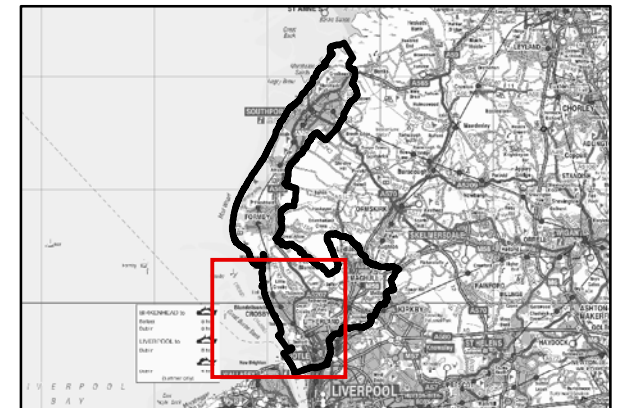
REV
-



THIS DRAWING MAY BE USED ONLY FOR
THE PURPOSE INTENDED

Legend

- Borough Administrative Boundary
- Main River
- Ordinary Watercourse
- Leeds and Liverpool Canal
- Permanent Water Bodies
- Defended fluvial model flood outlines
 - 1 in 25 Annual Probability Flood Event
 - 1 in 100 Annual Probability Flood Event
 - 1 in 100 Annual Probability plus Climate Change Flood Event
 - 1 in 1000 Annual Probability Flood Event



Notes

THE INFORMATION PRESENTED HAS BEEN OBTAINED FROM AVAILABLE HYDRAULIC MODELS THAT SHOW THE POTENTIAL CONSEQUENCES OF FLUVIAL FLOODING WITHIN SEFTON.

FLOOD DATA PROVIDED BY THE ENVIRONMENT AGENCY 2012. ALL RIGHTS RESERVED (REF: PRE4990).

REPRODUCED FROM ORDNANCE SURVEY MAPPING WITH THE PERMISSION OF THE CONTROLLER OF HER MAJESTY'S STATIONERY OFFICE. © CROWN COPYRIGHT. ALL RIGHTS RESERVED. SEFTON OS COPYRIGHT (100018192) 2012. UNAUTHORISED REPRODUCTION INFRINGES COPYRIGHT AND MAY LEAD TO PROSECUTION OR CIVIL PROCEEDINGS.



Sefton Level 2 Strategic Flood Risk Assessment

Scale at A3	Date	Drawn by	Approved by
1:40,000	25/10/2012	ER	PR

Figure 6-3
Fluvial Flood Risk Extents with Defences

Consultants

CAPITA SYMONDS

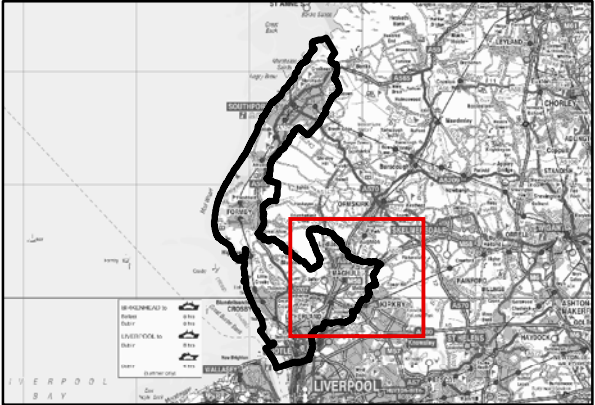
Capita Symonds
Omnia One,
Queen Street,
Sheffield,
S1 2DG.

DRAWING NUMBER
CS057949/Fig 6-3

REV
-

Legend

- Borough Administrative Boundary
- Main River
- Ordinary Watercourse
- Leeds and Liverpool Canal
- Permanent Water Bodies
- Defended fluvial model flood outlines
 - 1 in 25 Annual Probability Flood Event
 - 1 in 100 Annual Probability Flood Event
 - 1 in 100 Annual Probability plus Climate Change Flood Event
 - 1 in 1000 Annual Probability Flood Event



Notes

THE INFORMATION PRESENTED HAS BEEN OBTAINED FROM AVAILABLE HYDRAULIC MODELS THAT SHOW THE POTENTIAL CONSEQUENCES OF FLUVIAL FLOODING WITHIN SEFTON.

FLOOD DATA PROVIDED BY THE ENVIRONMENT AGENCY 2012. ALL RIGHTS RESERVED (REF: PRE4990).

REPRODUCED FROM ORDNANCE SURVEY MAPPING WITH THE PERMISSION OF THE CONTROLLER OF HER MAJESTY'S STATIONERY OFFICE. © CROWN COPYRIGHT. ALL RIGHTS RESERVED. SEFTON OS COPYRIGHT (100018192) 2012 UNAUTHORISED REPRODUCTION INFRINGES COPYRIGHT AND MAY LEAD TO PROSECUTION OR CIVIL PROCEEDINGS.



Sefton Level 2 Strategic Flood Risk Assessment

Scale at A3 1:40,000	Date 25/10/2012	Drawn by ER	Approved by PR
-------------------------	--------------------	----------------	-------------------

Figure 6-4
Fluvial Flood Risk Extents with Defences

Consultants
CAPITA SYMONDS
Capita Symonds
Omnia One,
Queen Street,
Sheffield,
S1 2DG.

DRAWING NUMBER CS057949/Fig 6-4	REV -
------------------------------------	----------

