



# Your Council Tax explained

And how Sefton Council spends its budget on services that benefit the communities it serves

Sefton Council 



Q

How much more will council services cost me each week in 2022/23?

A

The weekly increase of **2.99%** for a Band C property would be...

**£0.88**  
extra a week

<b>2021/2022</b>	Band C property was	<b>£29.31</b>	a week
<b>2022/2023</b>	Band C property will be	<b>£30.19</b>	a week
	Increase	<b>£0.88</b>	a week






\* Figures for Sefton Council services not including Police, Fire, Parish and Liverpool City Region Metro Mayor tax amounts.



# Your Council Tax for 2022/2023

Your total Council Tax for 2022/2023 supports your Council services, police, fire and the Liverpool City Region Metro Mayor.

The Band C charges for 2022/2023 are:

Sefton Council Services (including Transport and Waste Disposal/ Recycling provided by other bodies)	Police Element	Fire and Rescue Authority Element	LCR Metro Mayor	Total Council Tax Charge
<b>£1569.58</b>	<b>£ 210.64</b>	<b>£ 74.32</b>	<b>£ 16.89</b>	<b>£ 1,871.43</b>
				



## Where does every £100 of your Council Tax go?



Adult Social Care  
£36.42



Safeguarding Children  
£17.28



Children, young people and families  
£8.82



Cleaning your streets  
£1.50



Emptying your bins  
£2.57



Getting rid of your rubbish  
£5.68



Keeping your roads safe  
£3.32



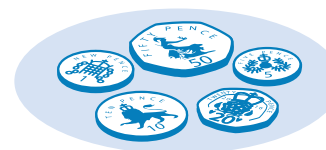
Protecting your health and wellbeing  
£7.78



Skills and Jobs  
£0.86



Living, working and having fun  
£15.78





# Council budget and your Council Tax explained



## Dear Sefton resident,

I would like to thank you for continuing to follow the Covid-19 rules and guidance that apply to all of us. I would also like to extend my sincere condolences to you and your family if you have lost any loved ones during the pandemic.

Since 2010, before Coronavirus, Sefton Council had to deal with over 51% cut in funding for the Borough from the Government. And sadly, I am writing to you at the end of another year when the Government has failed to recognise just how hard our Borough has been hit by over a decade of those cuts and the COVID pandemic.

Instead of providing the funding we need to deliver services for local people and businesses and ensure a brighter future for all, the Government is, once again, forcing us to increase Council Tax to pay for vital services instead.

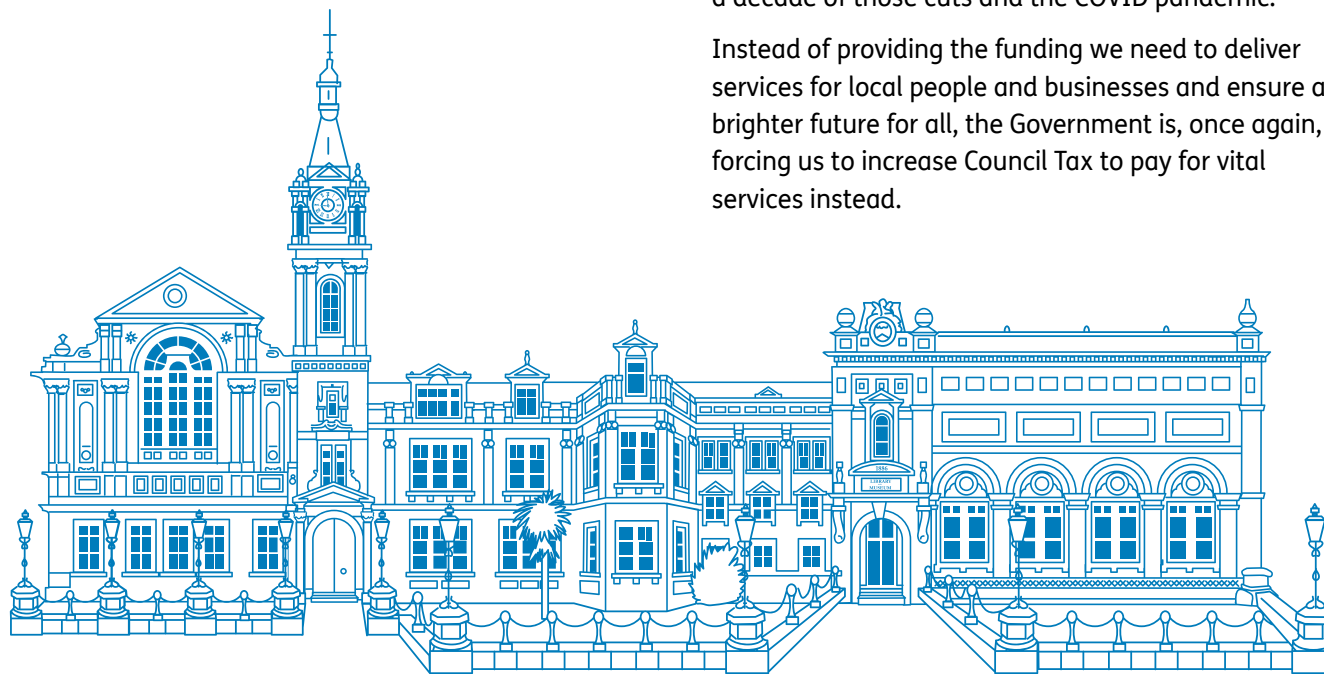
I am glad to see Ministers have come up with a Rebate scheme for some households. But the reason this Rebate is needed is the Government's own mis-management and lack of vision.

If we are going to be able to build back better from the damage done by this Government's policy of austerity and the impact of the pandemic, then we need sustainable, three-year financial settlements that would enable us to plan strategically and support our frontline services.

Finally, I want to thank our incredibly hardworking staff and partners who have and continue to deliver services that keep us all safe and well during incredibly difficult times. They deserve more than claps and badges from this Government.

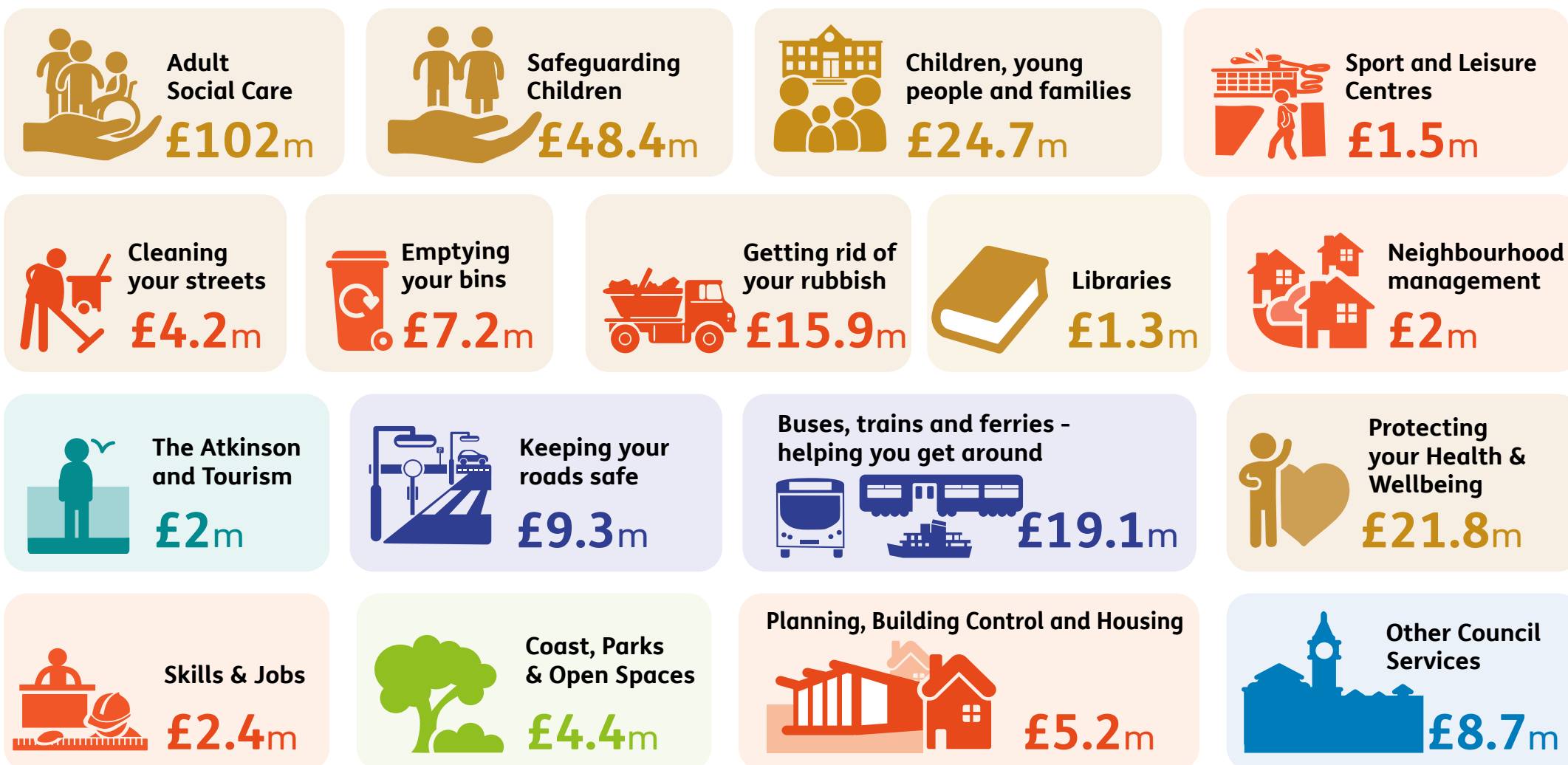


Ian Maher  
Leader of Sefton Council





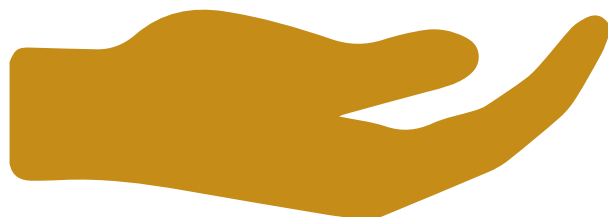
# What do you get for your money? – Here's what we expect to spend in 2022/23



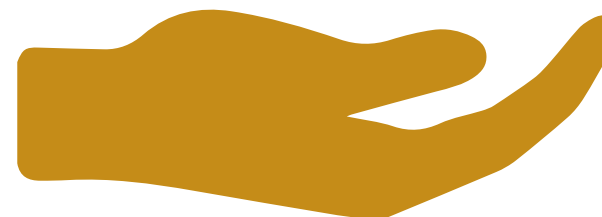


Children's social care is being pushed to the limit. The number of children in our care has increased by over 14% since 2019/20

693  
(2019/20)



787  
(2021/22)





# Key Council Facts:

**275,899**   
**residents**

This includes:

0-17 year olds **54,098** (19.6%).  
National average England is 21.4%

18-64 year olds **156,338** (56.7%)  
National average England is 60.1%

65 years and above **65,463** (23.7%)  
The national average in England is 18.5%

**5,800** 

**Long-term  
service users**

**607** 

**miles of  
roads**

**18** 

**Nature reserves and  
sites of scientific  
interest**

**1,341**

**Children are  
safeguarded**

**8** 

**Leisure Centres**

**6** 

**Libraries**

**129,206** is the total number of properties in  
Council Tax bands A-H

**30,790** Total number of properties in band C

**8,100** Businesses make their home across  
the borough

**4,839**

**Children  
with special  
educational needs  
and disabilities**

**22** 

**Miles of glorious  
coast**

**26** Main  
parks

**140**   
Other parks and  
green spaces