

# #WFT NEWS

A Sefton Council publication



## What's happening?

Welcome to Sefton Council's newsletter in which we are asking the question WFT?

**WFT stands for Why Fly Tip** and is part of a project focused on areas where people have shared rear entries.

The campaign highlights how piles of fly-tipped rubbish can make the ideal home for unwanted neighbours like rats and flies.

It also explains the fire risk and other problems that result from shared rear entries full of rubbish.

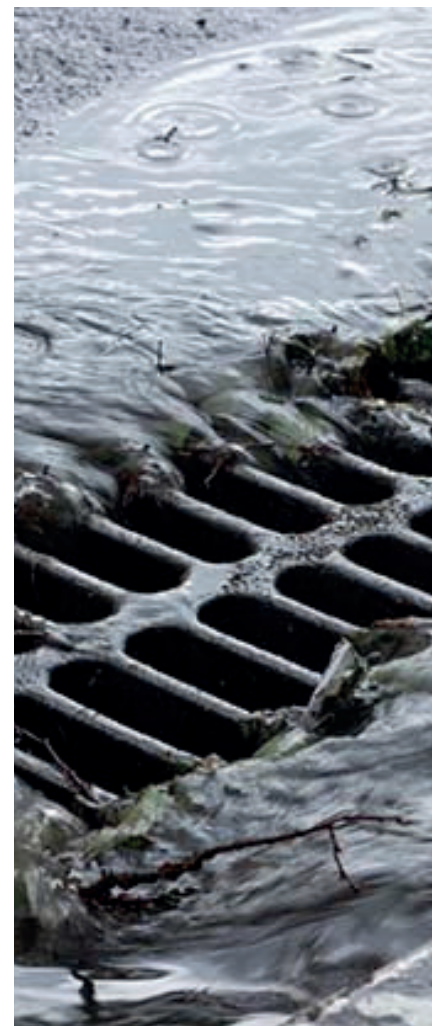
Over the next few weeks, we are going to be highlighting the problem, so we can all ask ourselves WFT?

Council Street Cleansing teams have already moved into your area to start clearing shared rear entries of dumped rubbish.

At the same time, weeds and overhanging vegetation are being cleared.

After these clearances, our teams will be calling door-to-door on daily visits talking to residents about the potential hazards. They will also be reminding them of their household duty of care.

And, in a bid to nip the problem in the bud, they will also challenge residents if any new waste appears.



# What can I do?

## Donate

Often, unwanted items of furniture can be passed on to local people who need them. The Council works with local charities who collect furniture that is in good condition and can be re-used, free of charge. You can find out more and check with each charity which items are accepted:

- **Emmaus** at [emmaus.org.uk](http://emmaus.org.uk)
- **British Heart Foundation** at [www.bhf.org.uk](http://www.bhf.org.uk)

## Household Waste Recycling Centres in Sefton

Household Waste Recycling Centres accept bulky items such as furniture and white goods (e.g. fridges and freezers).

## Your nearest sites are at:

- South Sefton Household Waste Recycling Centre, Irlam Road, Bootle L20 4AE
- Sefton Meadows Household Waste Recycling Centre, Sefton Lane, Maghull L31 8BX

## Council Bulky Household Waste Collection

The Council can collect up to three bulky household waste items from residential properties for just £14.00 (please note that sofas are counted as an item per seat).

To arrange a Bulky Household Waste Collection, visit [www.sefton.gov.uk/bulky-items](http://www.sefton.gov.uk/bulky-items)

## Legal action

Environmental Enforcement officers will investigate for

evidence of fly tipping offences and issue Fixed Penalty Notices or, if there is the need, prosecute offenders. Fly tipping can attract a fixed penalty fine up to £400. Last year, a waste disposal company director who oversaw the illegal dumping of rubbish at a former garage site was hit with a bill totalling more than £8,500 after the Council took them to court.

## Avoid a rubbish deal

If you get someone to take away your rubbish for you, make sure they are not going to fly-tip it. Because if they do, the law says you could end up with a fine if other people have dumped on your behalf.

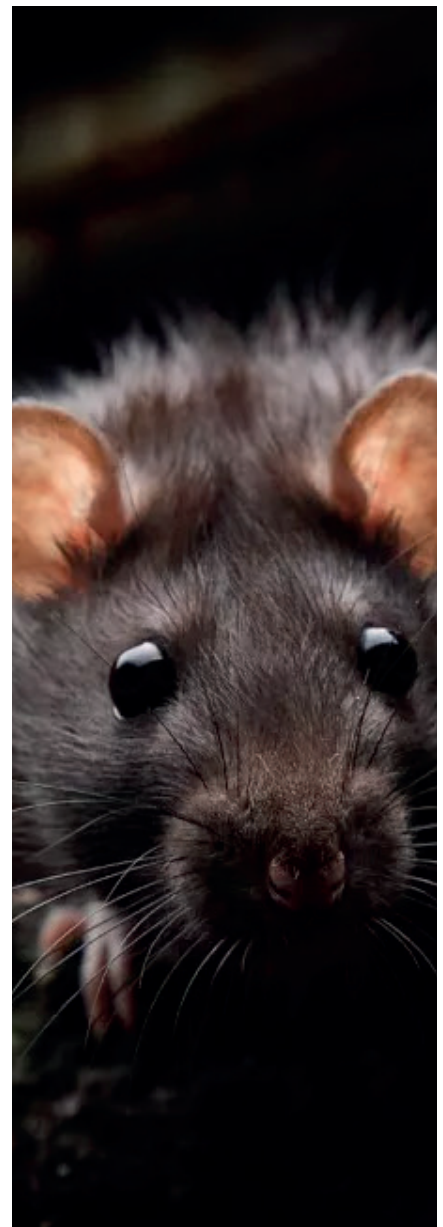
If you hire someone to dispose of your rubbish you should:

- ask the person who collects your waste to see their registration – it should start with CBDU, followed by a set of numbers. Take a photo if possible;
- check them out via the Government's registered waste carrier webpages or call the

Environment Agency on 03708 506506.

- ask where they're planning to take your waste and if they have a waste transfer note. Don't pay cash. Ask for an invoice and pay by a secure payment method, so payments can be traced if the waste is fly-tipped. It is also a good idea to get more than one quote and expect to pay a reasonable fee.

Don't let a deal that sounds too good to be true, end up being an expensive mistake!





**A message from Cllr Peter Harvey, Sefton Council's Cabinet Member - Cleansing and Street Scene**

"Fly-tipping in shared rear entries is a problem people often raise.

When you look at the creatures you may find living and breeding on your back doorstep in abandoned furniture and other rubbish and also consider the diseases they can carry and risks like fire, the inevitable question is 'Why Fly Tip?' or as our campaign says, #WFT.

"Through this campaign we are posing the question #WFT? but also explaining

what services are available to get rid of unwanted items. These include donating unwanted items of furniture to charities and using the Council's bulky items service. You can find out more at [www.sefton.gov.uk/WFT](http://www.sefton.gov.uk/WFT).

"We hope that by clearing the shared rear entries and keeping an eye on them to make sure further fly-tipping doesn't take place, we can stop the problem re-occurring in the long term. These return visits will include speaking to residents and taking enforcement action where necessary."

"Generally, fly-tipping is an issue which can affect the whole of Sefton and costs the Council a six-figure sum every year to remove and dispose of. That's hundreds of thousands of pounds that could otherwise be spent on important local services to benefit people in the Borough.

"We ask that anyone spotting incidents of this type of anti-social behaviour / environmental crime, reports it to Sefton Council at

[www.sefton.gov.uk/fly-tipping](http://www.sefton.gov.uk/fly-tipping)

or by calling 0345 140 0845."

# Grant

Sefton Council successfully applied to the Government Department for Environment Food & Rural Affairs (DEFRA) for £50,000 from its Fly-Tipping Intervention Grant scheme for the #WFT? campaign.

DEFRA issued grants totalling £994,547 to 26 councils under the latest round of its Fly-Tipping Intervention Grant programme.

**Learn more about the #WFT campaign**

Visit [www.sefton.gov.uk/wft](http://www.sefton.gov.uk/wft) or use the QR code below.



Sefton Council 



# What are the hazards?

## **Rats**

Rats, mice and insects love the environment that fly-tipped rubbish creates. And once they've made themselves at home and started breeding, they can multiply very quickly.

A female rat gives birth to around six litters of up to 12 baby rats each year and these babies can start reproducing when they are 10 weeks old. This means the original pair that snuggled up in an abandoned sofa can become over 1,000 in 12 months, with all the problems that can create including infections that can be transmitted to people.

Rodent infections that can be passed on to humans include leptospirosis, hantavirus, rat-bite fever and a type of meningitis

## **Flies**

Despite their short lives, house flies are extremely (re)productive with females able to lay up to 500 eggs over a three-to-four-day period. House flies are estimated by the World Health Organization to transmit around 65 diseases.

These include salmonella, E.coli 0157 and campylobacter which can cause food poisoning, which

can result in severe diarrhoea, vomiting and occasionally, more serious complaints.

And they are attracted by food waste and rubbish. They travel from different food sources feeding as they go and causing cross contamination.

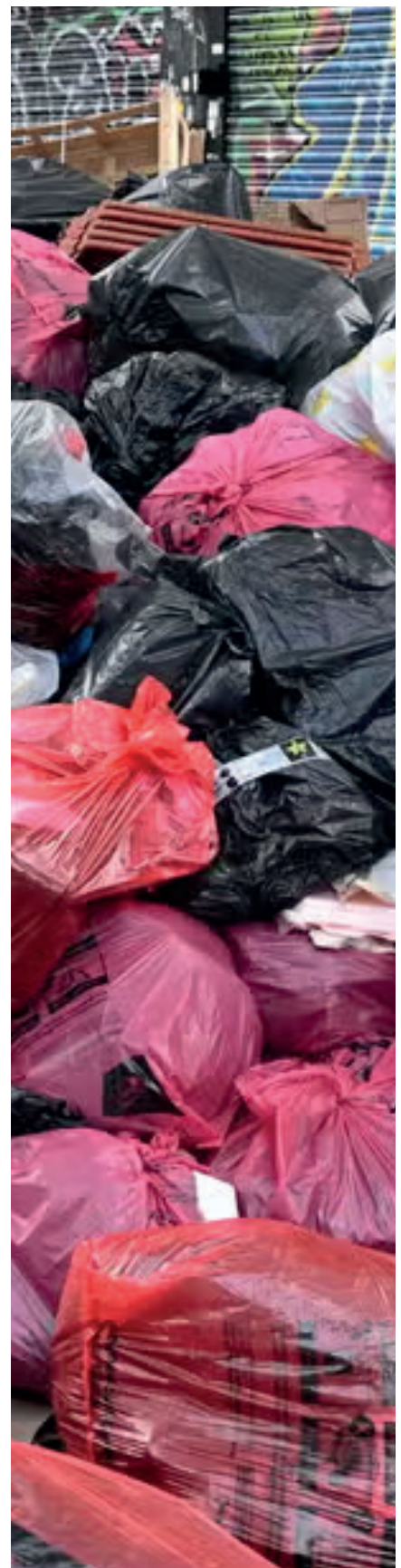
## **Fire risk**

A rear entry blocked with rubbish could mean that if there is a fire, the emergency services might struggle to get to your property. And the rubbish itself could be a fire hazard. Removing rubbish or fighting to extinguish a fire and get through it, could take vital seconds and minutes, so important in rescuing you and your family from a fire or reducing damage to your home.

## **Drains and sewers**

Utility companies sometimes need to get access to drains and sewers to make sure they are clear and flowing properly and to make any repair needed.

If they are unable to do this, in rear entries, it could result in blockages, overflows and flooding of waste water or even sewage.



Sefton Council

