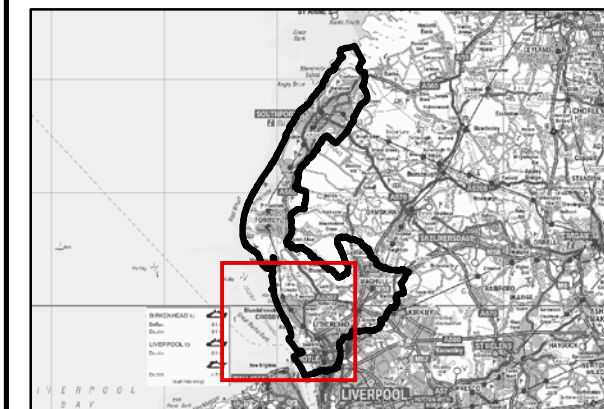


THIS DRAWING MAY BE USED ONLY FOR  
THE PURPOSE INTENDED

### Legend

- Borough Administrative Boundary
- Main River
- Ordinary Watercourse
- Leeds and Liverpool Canal
- Permanent Water Bodies
- Raised sections of canal
- Potential canal flow path in event of failure



### Notes

MODELLING OF CANAL BREACHES HAS NOT BEEN UNDERTAKEN. THE FLOW DIRECTIONS ARE BASED ON TOPOGRAPHICAL 'ROLLING-BALL' ANALYSIS ONLY.

REPRODUCED FROM ORDNANCE SURVEY MAPPING WITH THE PERMISSION OF THE CONTROLLER OF HER MAJESTY'S STATIONERY OFFICE. © CROWN COPYRIGHT. ALL RIGHTS RESERVED. SEFTON OS COPYRIGHT (100018192) 2012 UNAUTHORISED REPRODUCTION INFRINGES COPYRIGHT AND MAY LEAD TO PROSECUTION OR CIVIL PROCEEDINGS.

**Sefton Council**

## Sefton Level 2 Strategic Flood Risk Assessment

Scale at A3	Date	Drawn by	Approved by
1:40,000	25/10/2012	ER	PR

**Figure 20-1  
Potential Canal Risk**

### Consultants

**CAPITA SYMONDS**

Capita Symonds  
Omnia One,  
Queen Street,  
Sheffield,  
S1 2DG.

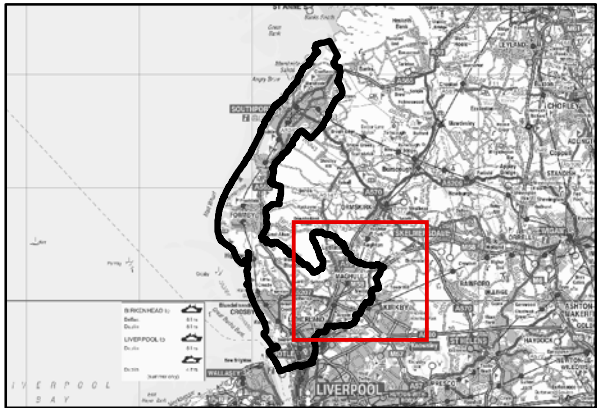
DRAWING NUMBER  
CS057949/Fig 20-1

REV  
-



Legend

- Borough Administrative Boundary
- Main River
- Ordinary Watercourse
- Leeds and Liverpool Canal
- Permanent Water Bodies
- Raised sections of canal
- Potential canal flow path in event of failure



Notes

MODELLING OF CANAL BREACHES HAS NOT BEEN UNDERTAKEN. THE FLOW DIRECTIONS ARE BASED ON TOPOGRAPHICAL 'ROLLING-BALL' ANALYSIS ONLY.

REPRODUCED FROM ORDNANCE SURVEY MAPPING WITH THE PERMISSION OF THE CONTROLLER OF HER MAJESTY'S STATIONERY OFFICE. © CROWN COPYRIGHT. ALL RIGHTS RESERVED. SEFTON OS COPYRIGHT (100018192) 2012 UNAUTHORISED REPRODUCTION INFRINGES COPYRIGHT AND MAY LEAD TO PROSECUTION OR CIVIL PROCEEDINGS.



Sefton Level 2 Strategic Flood Risk Assessment

Scale at A3 1:40,000	Date 25/10/2012	Drawn by ER	Approved by PR
-------------------------	--------------------	----------------	-------------------

Figure 20-2 Potential Canal Risk

Consultants

**CAPITA SYMONDS**

Capita Symonds  
Omnia One,  
Queen Street,  
Sheffield,  
S1 2DG.

DRAWING NUMBER CS057949/Fig 20-2	REV -
-------------------------------------	----------

