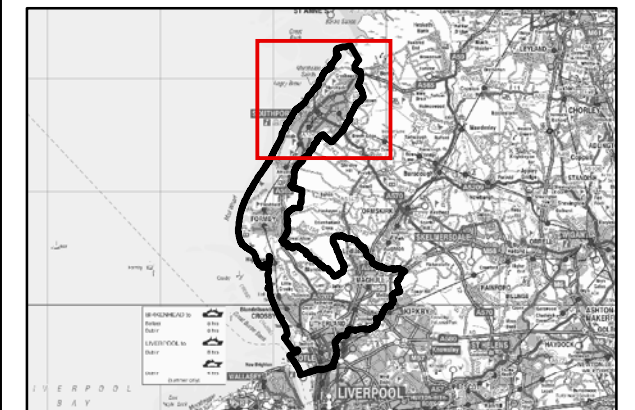


THIS DRAWING MAY BE USED ONLY FOR  
THE PURPOSE INTENDED

### Legend

- Borough Administrative Boundary
- Main River
- Ordinary Watercourse
- Leeds and Liverpool Canal
- Permanent Water Bodies
- Defended tidal model flood outlines
- 1 in 200 Annual Probability Flood Extent



### Notes

THE INFORMATION PRESENTED HAS BEEN OBTAINED FROM HYDRAULIC MODELS THAT SHOW THE POTENTIAL CONSEQUENCES OF COASTAL / TIDAL FLOODING WITHIN SEFTON FOR THE DEFENDED 1 IN 200 ANNUAL PROBABILITY SEA LEVEL.

FLOOD DATA PROVIDED BY THE ENVIRONMENT AGENCY 2012. ALL RIGHTS RESERVED (REF: PRE4990).

REPRODUCED FROM ORDNANCE SURVEY MAPPING WITH THE PERMISSION OF THE CONTROLLER OF HER MAJESTY'S STATIONERY OFFICE. © CROWN COPYRIGHT. ALL RIGHTS RESERVED. SEFTON OS COPYRIGHT (100018192) 2012 UNAUTHORISED REPRODUCTION INFRINGES COPYRIGHT



## Sefton Level 2 Strategic Flood Risk Assessment

Scale at A3 1:40,000	Date 25/10/2012	Drawn by ER	Approved by PR
-------------------------	--------------------	----------------	-------------------

**Figure 7-1  
Tidal Flood Risk Extents with Defences**

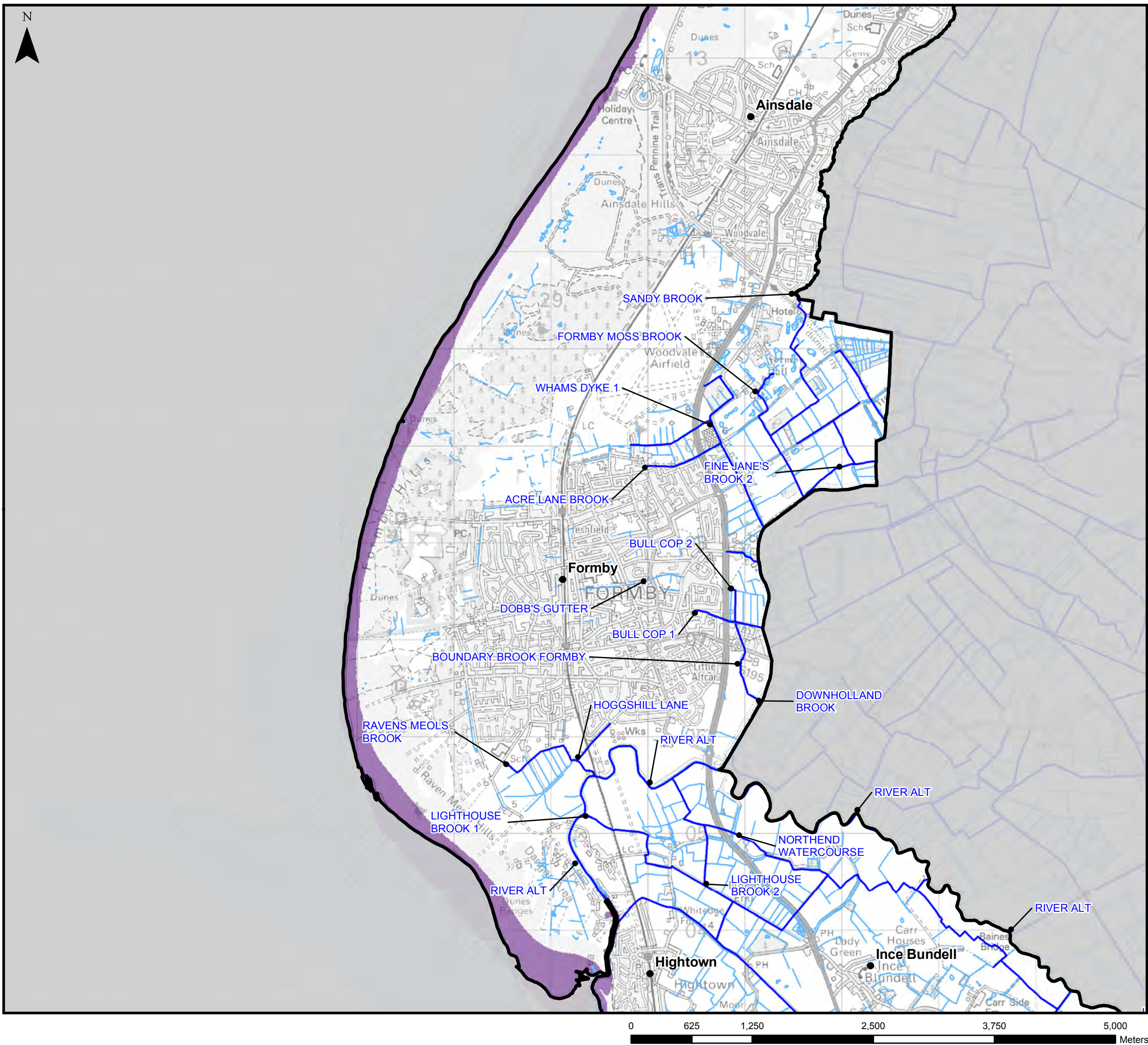
### Consultants

**CAPITA SYMONDS**  
Capita Symonds  
Omnia One,  
Queen Street,  
Sheffield,  
S1 2DG.

DRAWING NUMBER  
CS057949/Fig 7-1

REV  
-

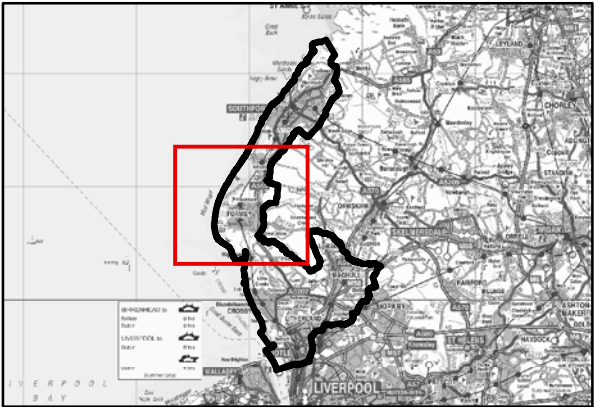




THIS DRAWING MAY BE USED ONLY FOR THE PURPOSE INTENDED

**Legend**

- Borough Administrative Boundary
- Main River
- Ordinary Watercourse
- Leeds and Liverpool Canal
- Permanent Water Bodies
- Defended tidal model flood outlines
- 1 in 200 Annual Probability Flood Extent



**Notes**

THE INFORMATION PRESENTED HAS BEEN OBTAINED FROM HYDRAULIC MODELS THAT SHOW THE POTENTIAL CONSEQUENCES OF COASTAL / TIDAL FLOODING WITHIN SEFTON FOR THE DEFENDED 1 IN 200 ANNUAL PROBABILITY SEA LEVEL.

FLOOD DATA PROVIDED BY THE ENVIRONMENT AGENCY 2012. ALL RIGHTS RESERVED (REF: PRE4990).

REPRODUCED FROM ORDNANCE SURVEY MAPPING WITH THE PERMISSION OF THE CONTROLLER OF HER MAJESTY'S STATIONERY OFFICE. © CROWN COPYRIGHT. ALL RIGHTS RESERVED. SEFTON OS COPYRIGHT (100018192) 2012 UNAUTHORISED REPRODUCTION INFRINGES COPYRIGHT



**Sefton Level 2  
Strategic Flood Risk Assessment**

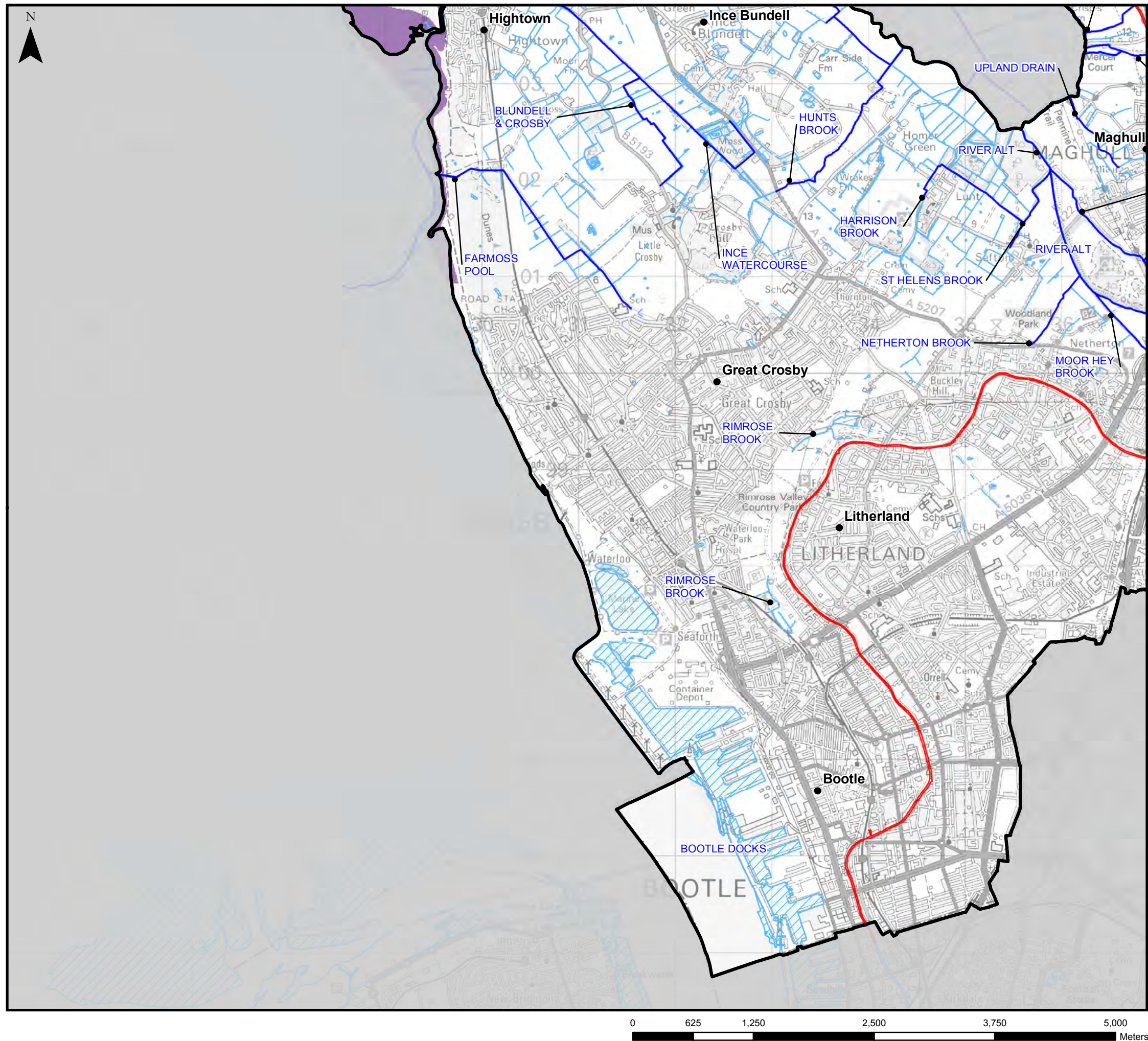
Scale at A3	Date	Drawn by	Approved by
1:40,000	25/10/2012	ER	PR

**Figure 7-2  
Tidal Flood Risk Extents with Defences**

Consultants  
**CAPITA SYMONDS**  
Capita Symonds  
Omnia One,  
Queen Street,  
Sheffield,  
S1 2DG.

DRAWING NUMBER	REV
CS057949/Fig 7-2	-

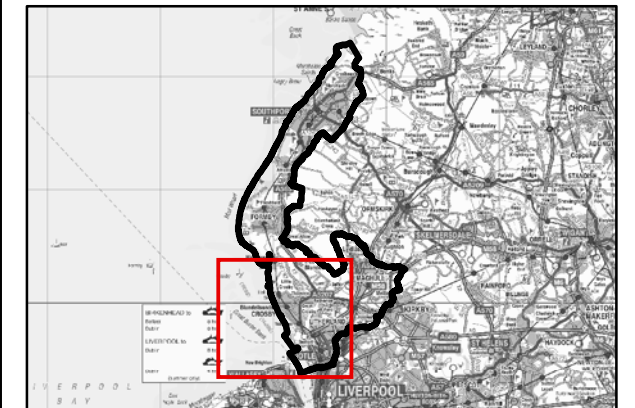




THIS DRAWING MAY BE USED ONLY FOR  
THE PURPOSE INTENDED

### Legend

- Borough Administrative Boundary
- Main River
- Ordinary Watercourse
- Leeds and Liverpool Canal
- Permanent Water Bodies
- Defended tidal model flood outlines
- 1 in 200 Annual Probability Flood Extent



### Notes

THE INFORMATION PRESENTED HAS BEEN OBTAINED FROM HYDRAULIC MODELS THAT SHOW THE POTENTIAL CONSEQUENCES OF COASTAL / TIDAL FLOODING WITHIN SEFTON FOR THE DEFENDED 1 IN 200 ANNUAL PROBABILITY SEA LEVEL.

FLOOD DATA PROVIDED BY THE ENVIRONMENT AGENCY 2012. ALL RIGHTS RESERVED (REF: PRE4990).

REPRODUCED FROM ORDNANCE SURVEY MAPPING WITH THE PERMISSION OF THE CONTROLLER OF HER MAJESTY'S STATIONERY OFFICE. © CROWN COPYRIGHT. ALL RIGHTS RESERVED. SEFTON OS COPYRIGHT (100018192) 2012 UNAUTHORISED REPRODUCTION INFRINGES COPYRIGHT

**Sefton Council**

## Sefton Level 2 Strategic Flood Risk Assessment

Scale at A3	Date	Drawn by	Approved by
1:40,000	25/10/2012	ER	PR

**Figure 7-3**  
Tidal Flood Risk Extents with Defences

### Consultants

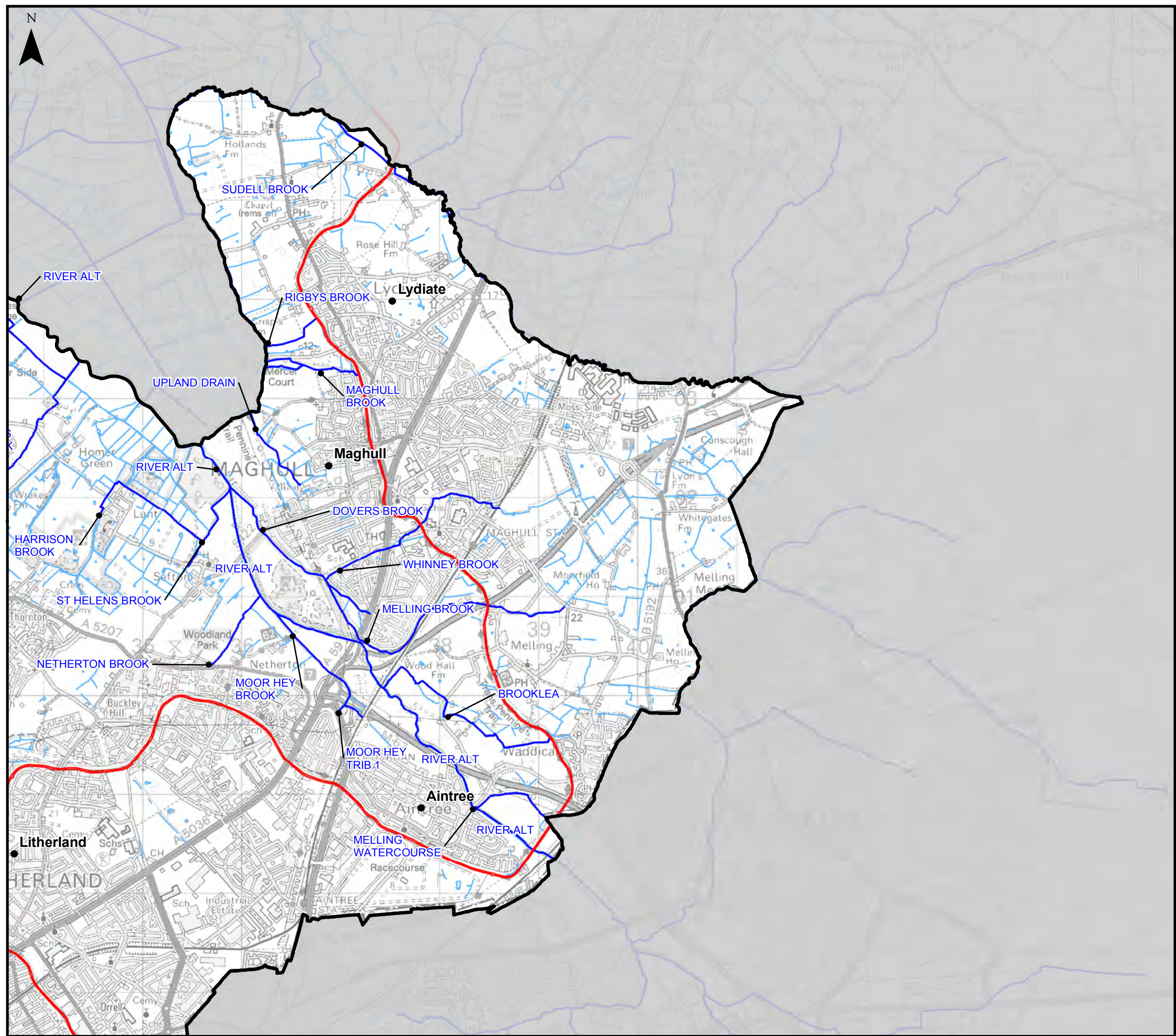
**CAPITA SYMONDS**

Capita Symonds  
Omnia One,  
Queen Street,  
Sheffield,  
S1 2DG.

DRAWING NUMBER  
CS057949/Fig 7-3

REV  
-

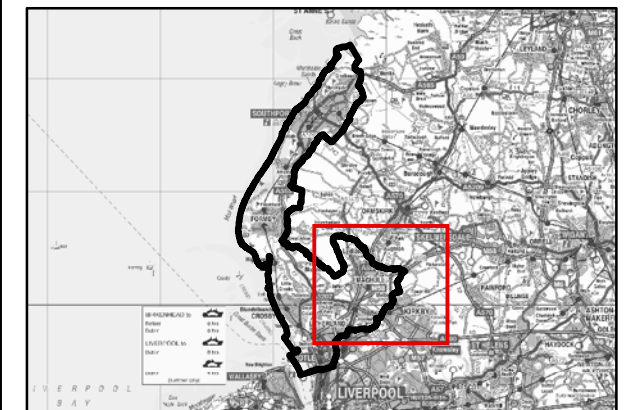




THIS DRAWING MAY BE USED ONLY FOR  
THE PURPOSE INTENDED

### Legend

- Borough Administrative Boundary
- Main River
- Ordinary Watercourse
- Leeds and Liverpool Canal
- Permanent Water Bodies
- Defended tidal model flood outlines
- 1 in 200 Annual Probability Flood Extent



### Notes

THE INFORMATION PRESENTED HAS BEEN OBTAINED FROM HYDRAULIC MODELS THAT SHOW THE POTENTIAL CONSEQUENCES OF COASTAL / TIDAL FLOODING WITHIN SEFTON FOR THE DEFENDED 1 IN 200 ANNUAL PROBABILITY SEA LEVEL.

FLOOD DATA PROVIDED BY THE ENVIRONMENT AGENCY 2012. ALL RIGHTS RESERVED (REF: PRE4990).

REPRODUCED FROM ORDNANCE SURVEY MAPPING WITH THE PERMISSION OF THE CONTROLLER OF HER MAJESTY'S STATIONERY OFFICE. © CROWN COPYRIGHT. ALL RIGHTS RESERVED. SEFTON OS COPYRIGHT (100018192) 2012 UNAUTHORISED REPRODUCTION INFRINGES COPYRIGHT



## Sefton Level 2 Strategic Flood Risk Assessment

Scale at A3	Date	Drawn by	Approved by
1:40,000	25/10/2012	ER	PR

**Figure 7-4**  
**Tidal Flood Risk Extents with Defences**

### Consultants

**CAPITA SYMONDS**

Capita Symonds  
Omnia One,  
Queen Street,  
Sheffield,  
S1 2DG.

DRAWING NUMBER  
CS057949/Fig 7-4

REV  
-