



Sefton Families First Partnership

Newsletter - April 2026

An Update on National Reforms and Local Progress within Sefton

Lots is changing in how children, young people and families are supported in Sefton — and we want YOU to know what's going on.

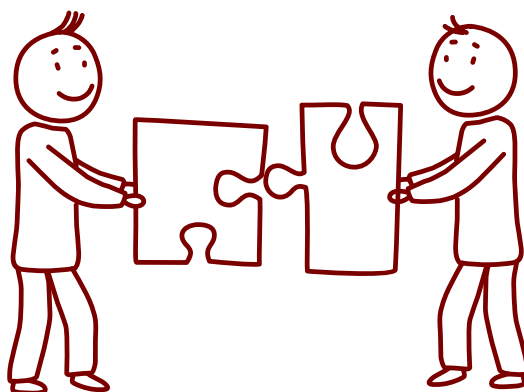
This newsletter gives you a simple, clear update on what's going on, what's being tested, and how things are improving.

💡 BIG CHANGES (WHAT'S GOING ON NATIONALLY)

There are some big changes happening across England to make support better for families:

- 🤝 **Families First Partnership (FFP)** – helping services work together better and support families earlier
- 🌱 **SEND Reforms** – improving support for young people with special educational needs and disabilities
- 🧒 **Best Start in Life** – giving babies and young children the best possible start
- 🏠 **Neighbourhood Health** – bringing health support closer to home

👉 In Sefton, our senior leaders have met during April to make sure that all of these changes join up. The aim? **Better support, earlier help, and less stress for families.**





Sefton Families First Partnership

WHAT IS HAPPENING IN SEFTON NOW?

New pilot in Bootle – Working Together to Help Families

In our March newsletter, we shared plans to launch a new pilot. We're pleased to say that this is now underway in Bootle, bringing together professionals such as social workers and early help workers to work more closely as one local team.

Early reflections so far:

- The pilot is currently in its early stages, with a focus on putting the right foundations in place for joined-up working
- Teams are beginning to come together and build shared ways of working across services
- Work is underway to establish a stronger presence within the local community
- We are taking a phased approach, allowing time to get the set-up right and ensure the pilot can last
- Ongoing feedback is helping to shape how the model develops over the coming months




This is an important step towards delivering our Family Help model, and we will continue to build and adapt the approach as the pilot progresses.

FAMILY SUPPORT PLAN (COMING SOON)

Back in March YOU decided the name for Sefton's Single assessment and plan - **Family Support Plan!**

In the month of April, parents and carers have been working incredibly hard alongside workers from across the partnership to draft a document that fits the needs of the families and workers in Sefton.

Some great ideas have been generated so far, below is a sneak peak of what young people, families and workers have discussed:

-  Clearer expectations — like what support they'll get and what's expected from them. So, we're working together to create a simple agreement that sets out what everyone can expect from each other. It'll be clear, fair, and the same for everyone.
-  Creating the plan in multiples ways, we know one size doesn't fit all! – Behind the scenes we are building a system that can create copies of the plan in multiple formats, for example paper and digital copies presented in a family friendly way.
-  What other councils are including in their Single assessment and plan – learning from what's worked and what doesn't has been considered during our co-design sessions with our young people, workers and parents and carers.

We've also discussed preparing our workforce and what training might look like – we will be consulting our workforce and partners during upcoming workshops!



Sefton Families First Partnership

SEFTON FAMILY LIFE TOOLKIT

Sefton Family Life Toolkit is a new virtual offer for families and workers. This will be launching alongside the Best Start in Life offer. It brings together information on:

- Health support
- Education info
- Local services
- SEND local offer support
- Community help
-

The Toolkit provides trusted information, services, and support in one accessible place.

👉 **You can visit the toolkit:**

By clicking the link here:

<https://www.seftonfamilylife.com/>

Or scan the barcode here:



**THANK
YOU**

A big thank you to all young people, families, staff and partners helping shape these changes.

✨ Stay tuned for more updates — and don't forget, your voice makes a difference!

**If you'd like to get involved or have any questions, please contact the Children's Transformation Team:
Childrenstransformation@sefton.gov.uk.**