

SEFTON COUNCIL, SCAPE, BALFOUR BEATTY ADDED VALUE REPORT (OCTOBER 2025) - SOUTHPORT PUBLIC REALM

BUILDING A STRONGER COMMUNITY: ENGAGEMENT AND IMPACT

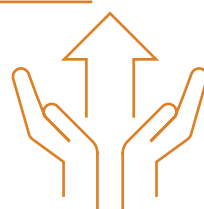


£1,500

worth of donations to community projects, SMEs/social enterprises

89

hours voluntarily spent supporting local community initiatives and volunteering events, strengthening community ties and promoting social value



45/45

Considerate Constructors Score

A CLEANER, GREEN, BEAUTIFUL BOROUGH: CARING FOR OUR ENVIRONMENT

49 tCO₂e

estimated carbon savings - achieved through smarter site set-up and cleaner power solutions via EcoNet, helping to reduce our environmental footprint

99.9%

waste diverted from landfill



101 tCO₂e

estimated carbon savings through smarter material choices and waste reduction, helping Sefton Council move closer to net zero ambitions

READY FOR THE FUTURE - A RESPONSIBLE COUNCIL

£688,209

social and local economic value add to date

(independently verified by The Social Value Portal using 'proxy values' to help measure the value delivered and quantify the wider value created within the local community)

100%

of the supply chain paid within 30 days aligned with the Government, and SCAPE, fair payment standards

100%

of the supply chain market tested on an Open Book Basis to guarantee value for money

OPEN FOR BUSINESS - INVESTING IN LOCAL GROWTH

74%

of the supply chain are SMEs, boosting local economy and fostering innovation

84%

spend is with SMEs, keeping investment local and supporting small businesses

78%

labour is local, creating jobs and investing in the community



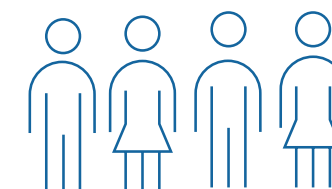
3,632

local employee days worked - boosting local employment and driving economic value directly into Sefton's communities

A BOROUGH FOR EVERYONE APPRENTICESHIPS AND TRAINING

470

students engaged in workshops, career talks or curriculum support, inspiring future careers and building local talent



78

staff hours spent on local school and college visits, supporting education and inspiring the next generation



122

weeks of apprenticeships provided, developing skilled workers and supporting long-term careers

3

weeks spent on meaningful work placements, providing hands-on experience and boosting employability



7

hours of support into work - including mock interviews, guidance and CV support - equipping unemployed residents with the skills and confidence to re-enter the workforce