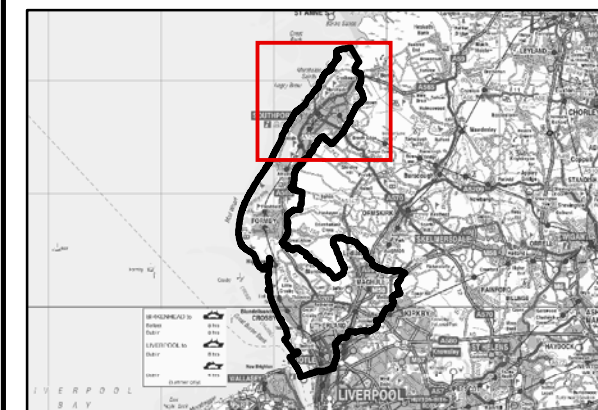


THIS DRAWING MAY BE USED ONLY FOR  
THE PURPOSE INTENDED

#### Legend

- Borough Administrative Boundary
- Main River
- Ordinary Watercourse
- Leeds and Liverpool Canal
- Permanent Water Bodies
- Groundwater Emergence Map



#### Notes

FLOOD DATA PROVIDED BY THE ENVIRONMENT AGENCY 2012. ALL RIGHTS RESERVED (REF: PRE4990).

REPRODUCED FROM ORDNANCE SURVEY MAPPING WITH THE PERMISSION OF THE CONTROLLER OF HER MAJESTY'S STATIONERY OFFICE. © CROWN COPYRIGHT. ALL RIGHTS RESERVED. SEFTON OS COPYRIGHT (100018192) 2012. UNAUTHORISED REPRODUCTION INFRINGES COPYRIGHT AND MAY LEAD TO PROSECUTION OR CIVIL PROCEEDINGS.

**Sefton Council**

### Sefton Level 2 Strategic Flood Risk Assessment

Scale at A3	Date	Drawn by	Approved by
1:40,000	25/10/2012	ER	PR

**Figure 17-1  
Groundwater Flood Risk**

#### Consultants

**CAPITA SYMONDS**







Capita Symonds  
Omnia One,  
Queen Street,  
Sheffield,  
S1 2DG.

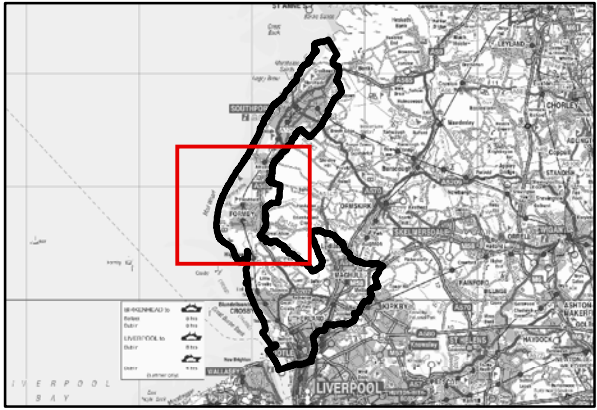
DRAWING NUMBER  
CS057949/Fig 17-1

REV  
-



**Legend**

-  Borough Administrative Boundary
-  Main River
-  Ordinary Watercourse
-  Leeds and Liverpool Canal
-  Permanent Water Bodies
-  Groundwater Emergence Map



**Notes**

FLOOD DATA PROVIDED BY THE ENVIRONMENT AGENCY 2012. ALL RIGHTS RESERVED (REF: PRE4990).

REPRODUCED FROM ORDNANCE SURVEY MAPPING WITH THE PERMISSION OF THE CONTROLLER OF HER MAJESTY'S STATIONERY OFFICE. © CROWN COPYRIGHT. ALL RIGHTS RESERVED. SEFTON OS COPYRIGHT (100018192) 2012 UNAUTHORISED REPRODUCTION INFRINGES COPYRIGHT AND MAY LEAD TO PROSECUTION OR CIVIL PROCEEDINGS.

**Sefton Council** 

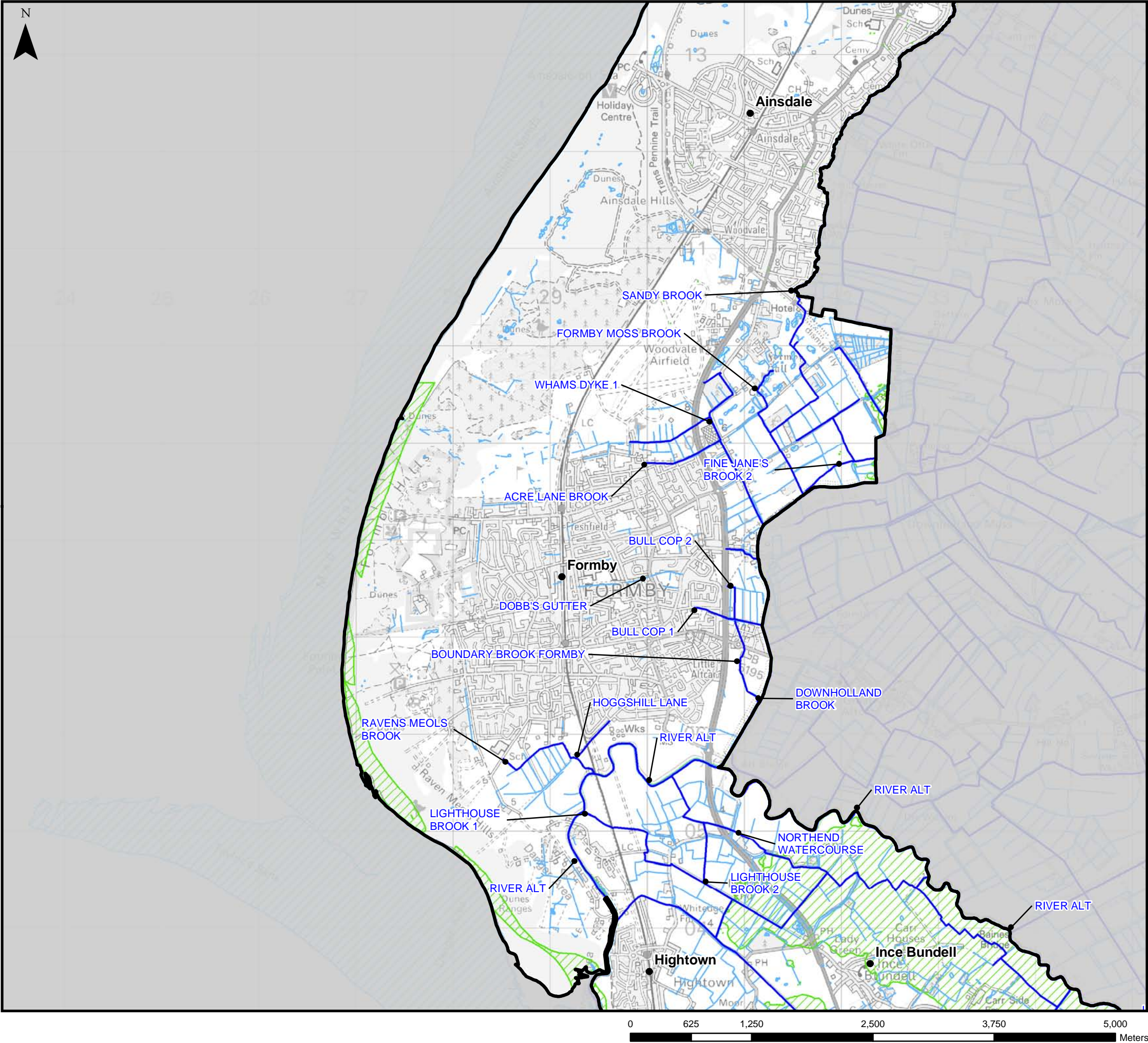
**Sefton Level 2  
Strategic Flood Risk Assessment**

Scale at A3	Date	Drawn by	Approved by
1:40,000	25/10/2012	ER	PR

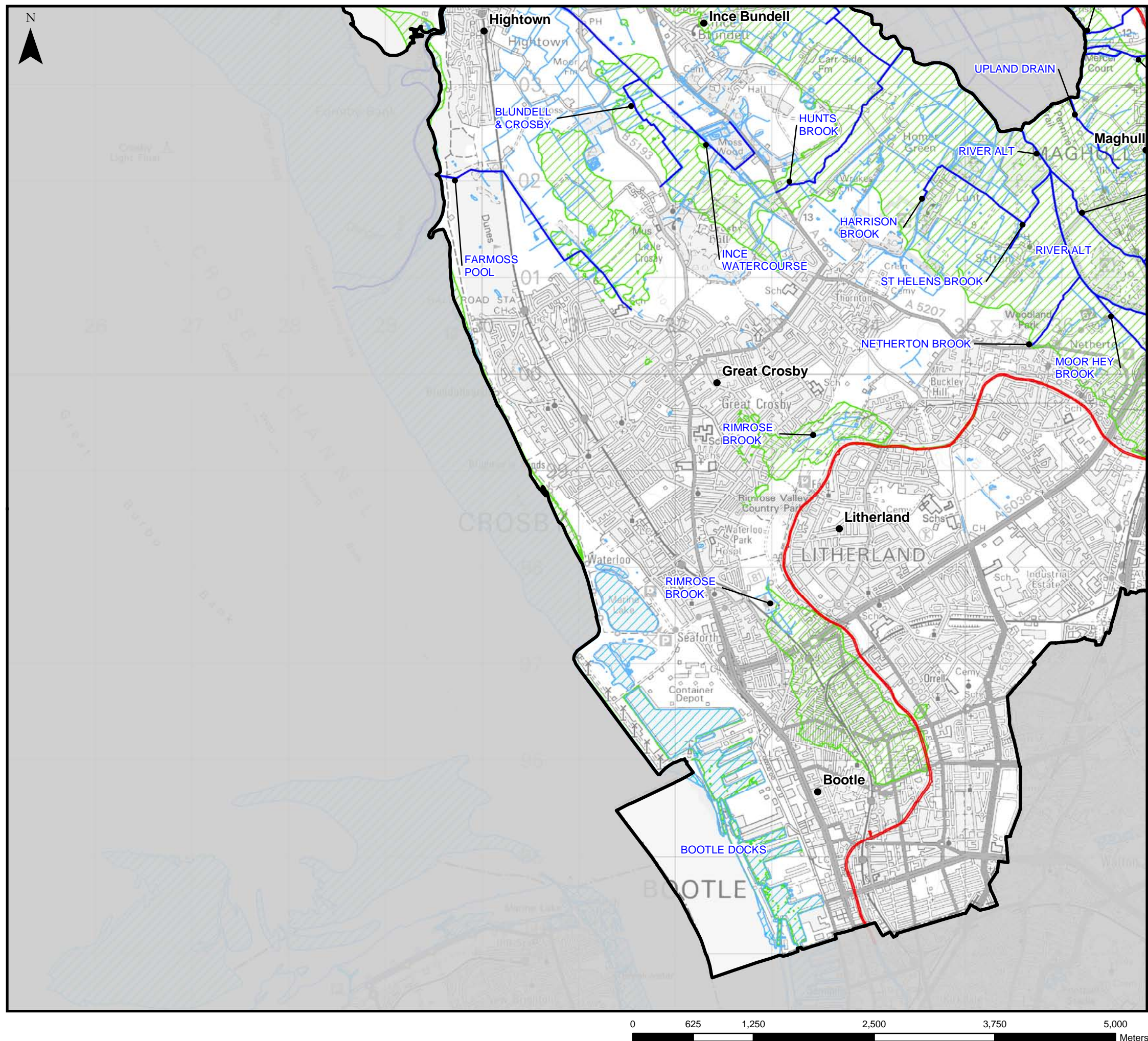
**Figure 17-2  
Groundwater Flood Risk**

Consultants  
**CAPITA SYMONDS**  
Capita Symonds  
Omnia One,  
Queen Street,  
Sheffield,  
S1 2DG.

DRAWING NUMBER	REV
CS057949/Fig 17-2	-



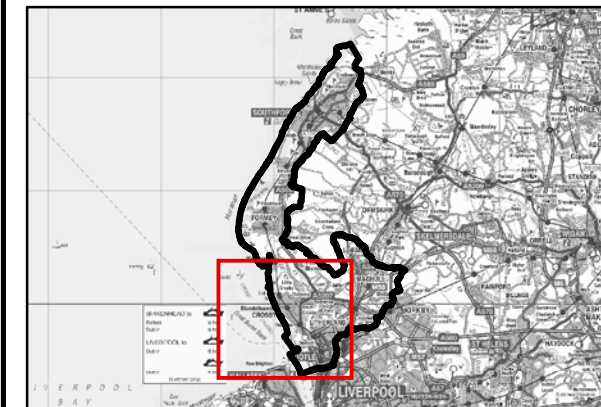




THIS DRAWING MAY BE USED ONLY FOR  
THE PURPOSE INTENDED

#### Legend

- Borough Administrative Boundary
- Main River
- Ordinary Watercourse
- Leeds and Liverpool Canal
- Permanent Water Bodies
- Groundwater Emergence Map



#### Notes

FLOOD DATA PROVIDED BY THE ENVIRONMENT AGENCY 2012. ALL RIGHTS RESERVED (REF: PRE4990).

REPRODUCED FROM ORDNANCE SURVEY MAPPING WITH THE PERMISSION OF THE CONTROLLER OF HER MAJESTY'S STATIONERY OFFICE. © CROWN COPYRIGHT. ALL RIGHTS RESERVED. SEFTON OS COPYRIGHT (100018192) 2012. UNAUTHORISED REPRODUCTION INFRINGES COPYRIGHT AND MAY LEAD TO PROSECUTION OR CIVIL PROCEEDINGS.

**Sefton Council**

### Sefton Level 2 Strategic Flood Risk Assessment

Scale at A3	Date	Drawn by	Approved by
1:40,000	25/10/2012	ER	PR

**Figure 17-3  
Groundwater Flood Risk**

#### Consultants

**CAPITA SYMONDS**







Capita Symonds  
Omnia One,  
Queen Street,  
Sheffield,  
S1 2DG.

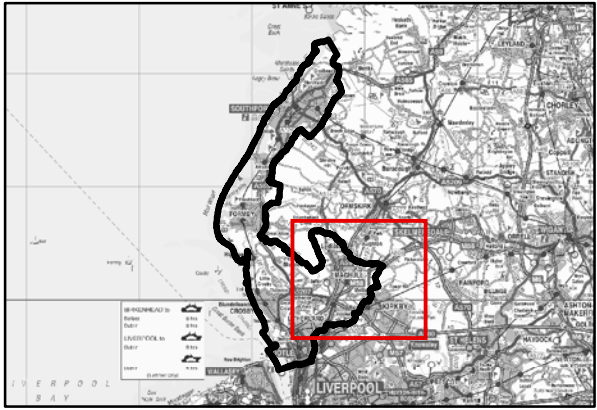
DRAWING NUMBER  
CS057949/Fig 17-3

REV  
-



**Legend**

-  Borough Administrative Boundary
-  Main River
-  Ordinary Watercourse
-  Leeds and Liverpool Canal
-  Permanent Water Bodies
-  Groundwater Emergence Map



**Notes**

FLOOD DATA PROVIDED BY THE ENVIRONMENT AGENCY 2012. ALL RIGHTS RESERVED (REF: PRE4990).

REPRODUCED FROM ORDNANCE SURVEY MAPPING WITH THE PERMISSION OF THE CONTROLLER OF HER MAJESTY'S STATIONERY OFFICE. © CROWN COPYRIGHT. ALL RIGHTS RESERVED. SEFTON OS COPYRIGHT (100018192) 2012. UNAUTHORISED REPRODUCTION INFRINGES COPYRIGHT AND MAY LEAD TO PROSECUTION OR CIVIL PROCEEDINGS.

**Sefton Council** 

**Sefton Level 2  
Strategic Flood Risk Assessment**

Scale at A3	Date	Drawn by	Approved by
1:40,000	25/10/2012	ER	PR

**Figure 17-4  
Groundwater Flood Risk**

Consultants

**CAPITA SYMONDS**

Capita Symonds  
Omnia One,  
Queen Street,  
Sheffield,  
S1 2DG.

DRAWING NUMBER  
CS057949/Fig 17-4

REV  
-

